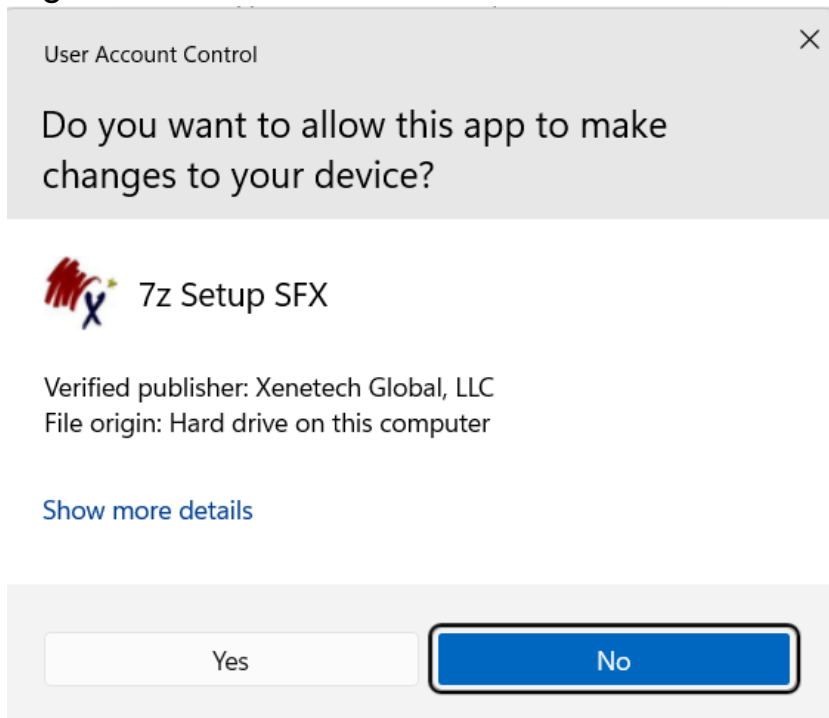


# **VIPER COMMUNICATION SUITE INSTALL & SETUP**

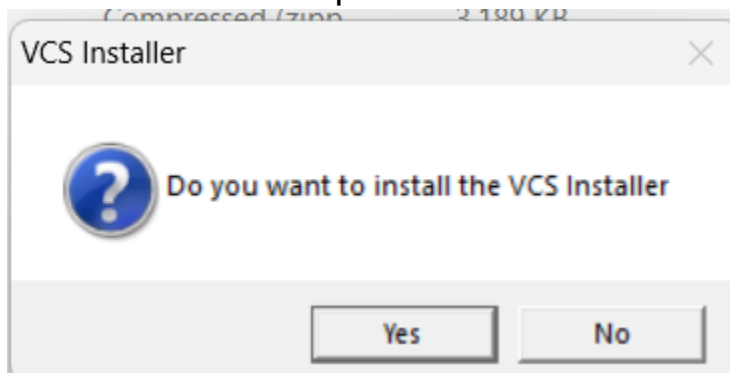


vcs release 196.exe

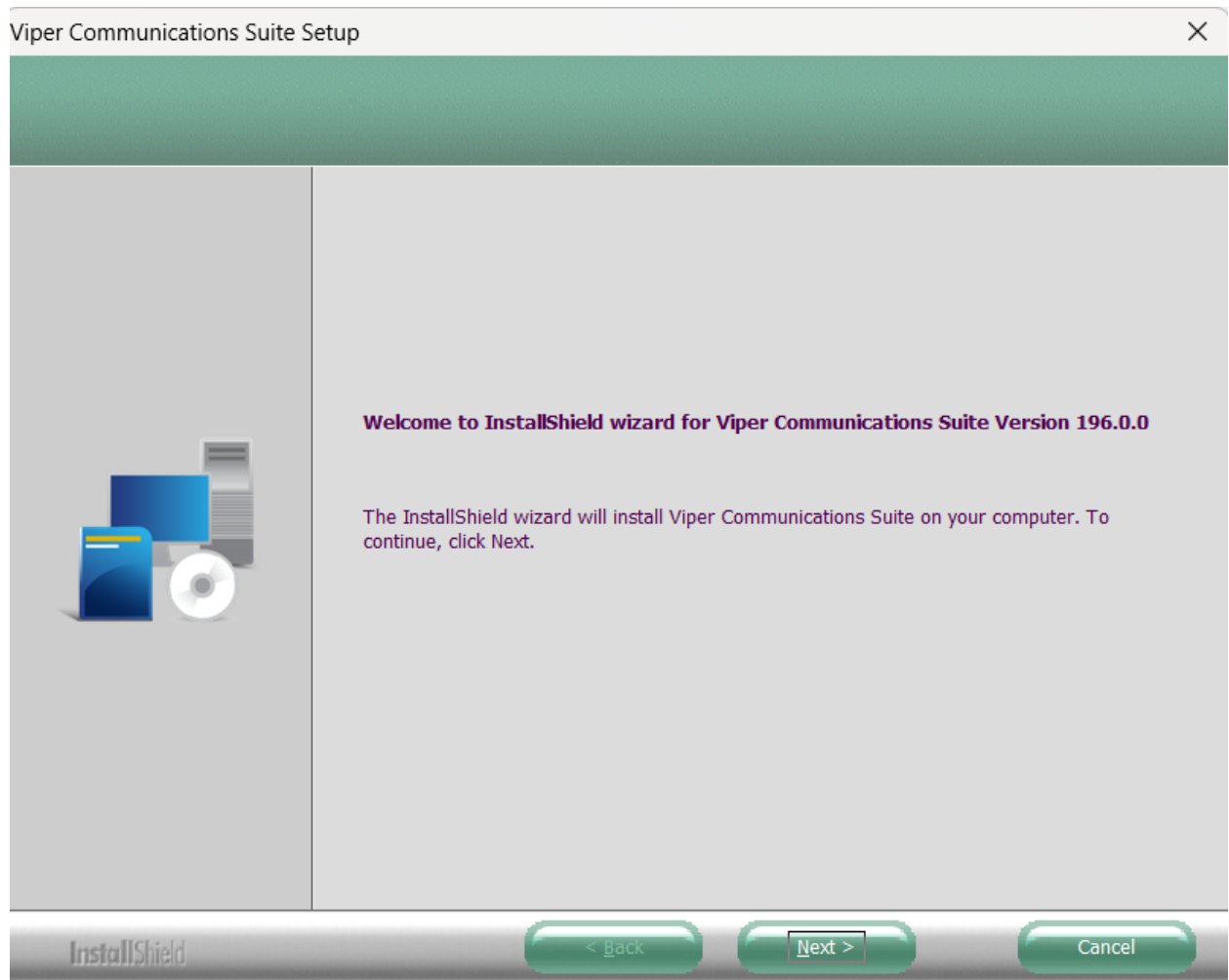
1. Make sure you have the latest version of VCS, version 196
2. Right click on it and select "Run as Administrator"



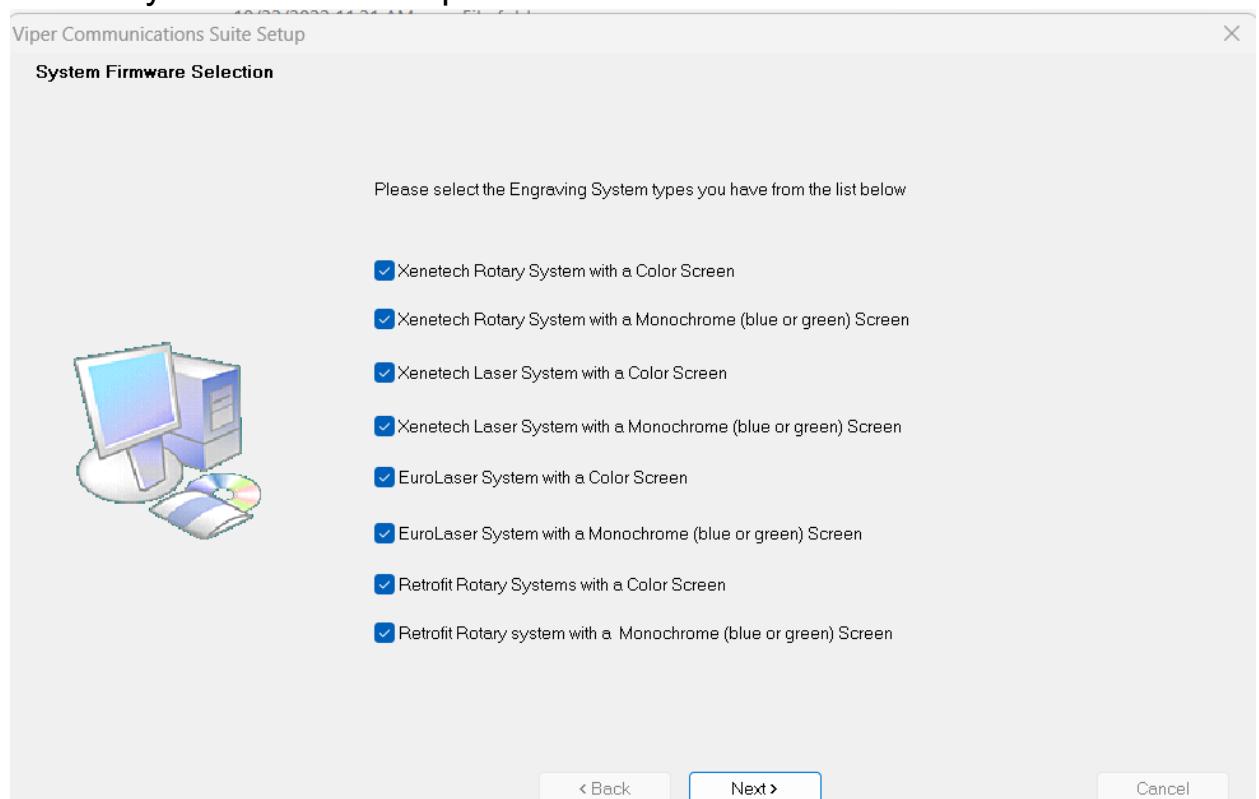
- 3.
4. Answer Yes to this question



- 5.
6. Answer Yes to this question

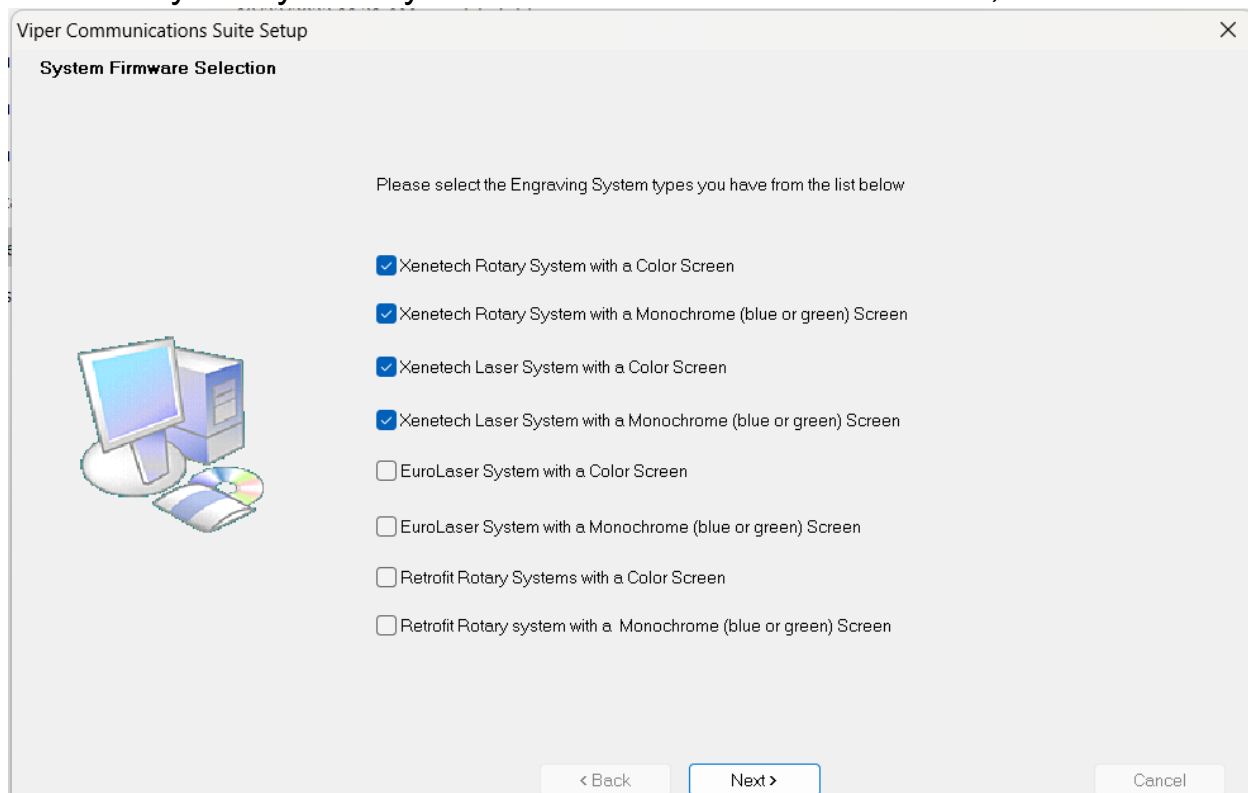


- 7.
8. Click next
9. Answer yes to the next 2 questions

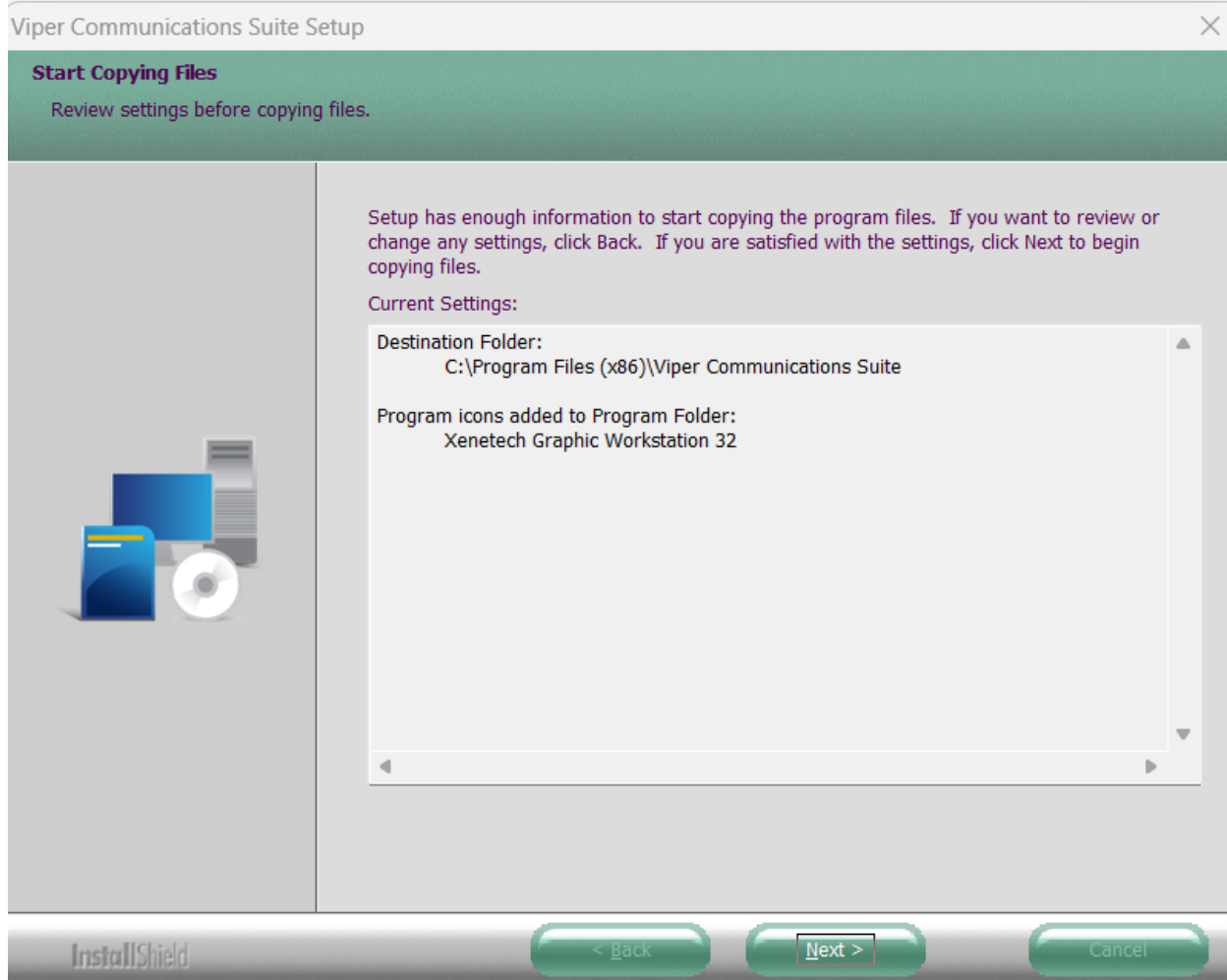


10.

11. Select only the systems you have and unselect all the others, then next



12.



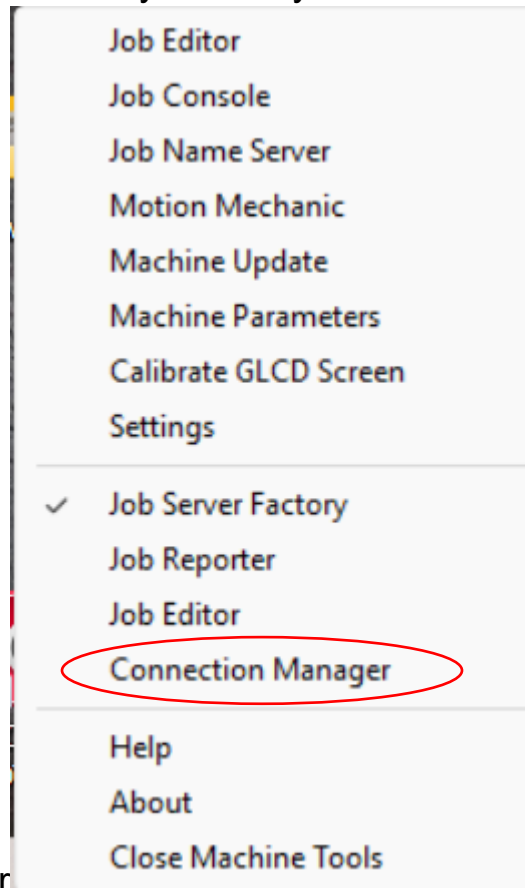
13.

14. Select next

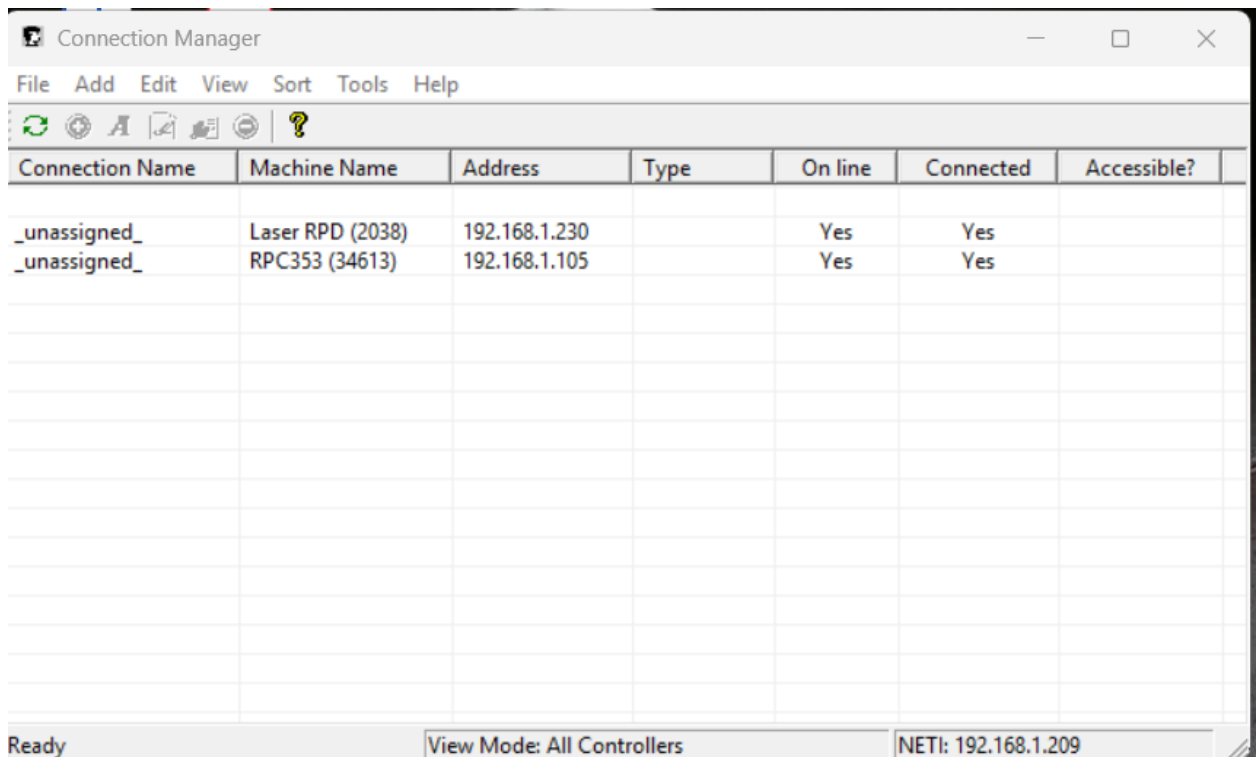
15. Wait while VCS is being installed
16. Click finish



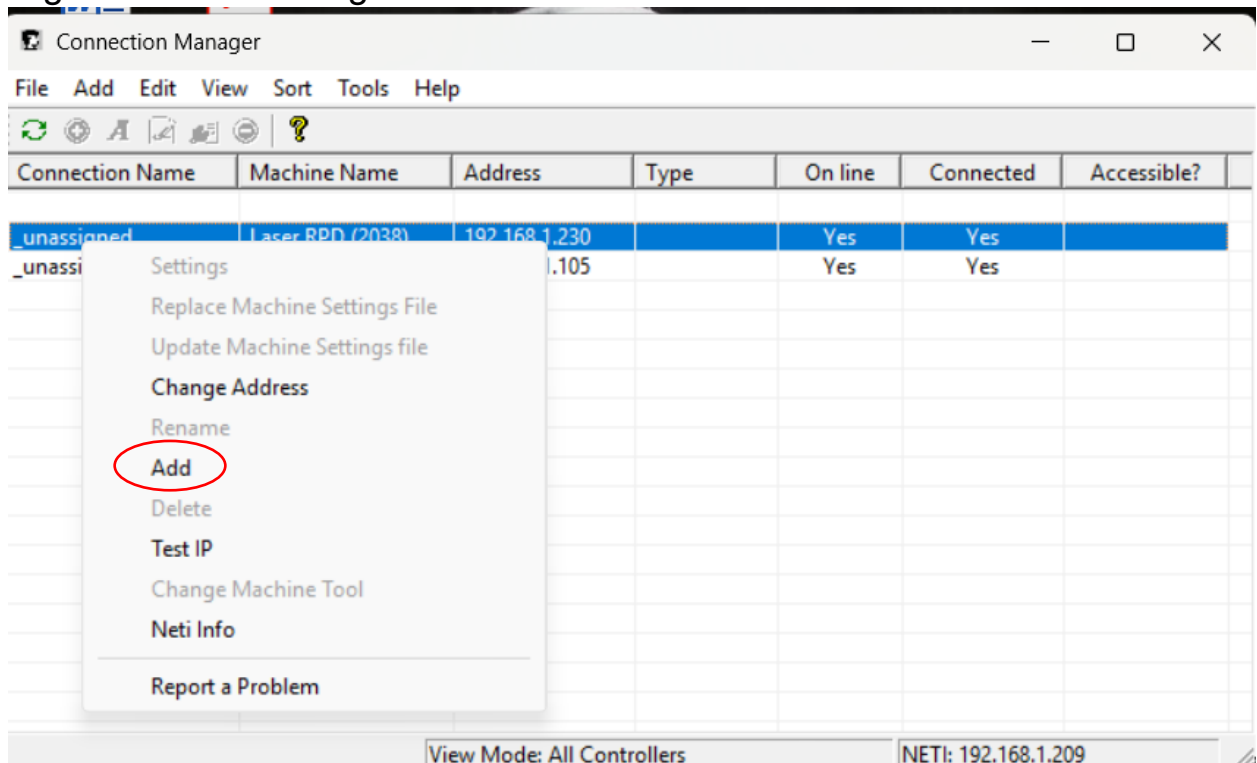
17. Right click on the VCS icon in the system tray



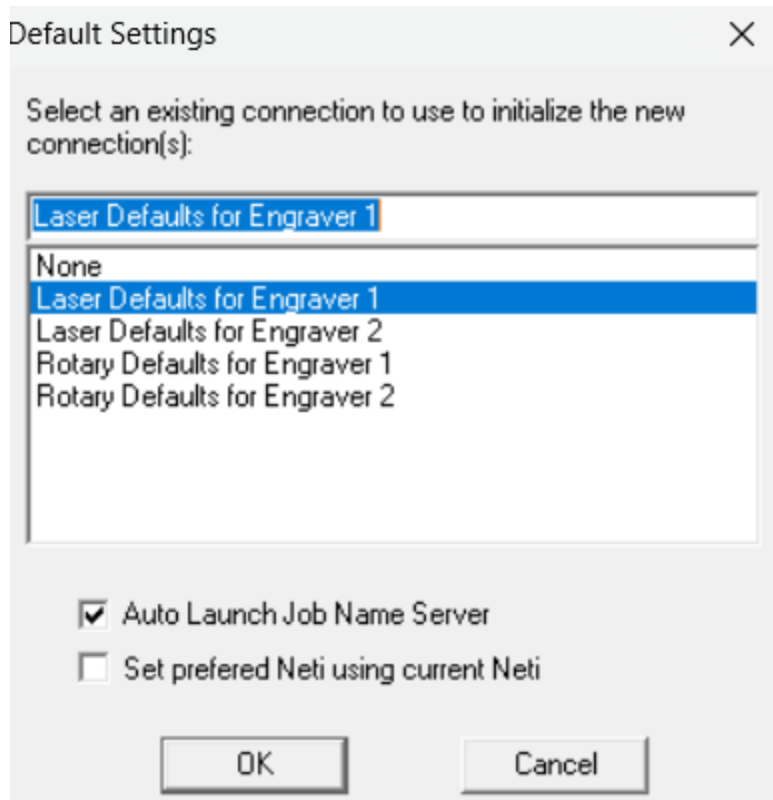
18. Select connection manager
19. Make sure your machine are turned on and connected to your network



20. Ready
21. This is showing my 2 machines connected, 1 laser and 1 rotary machine.
22. Right click on unassigned and select add.



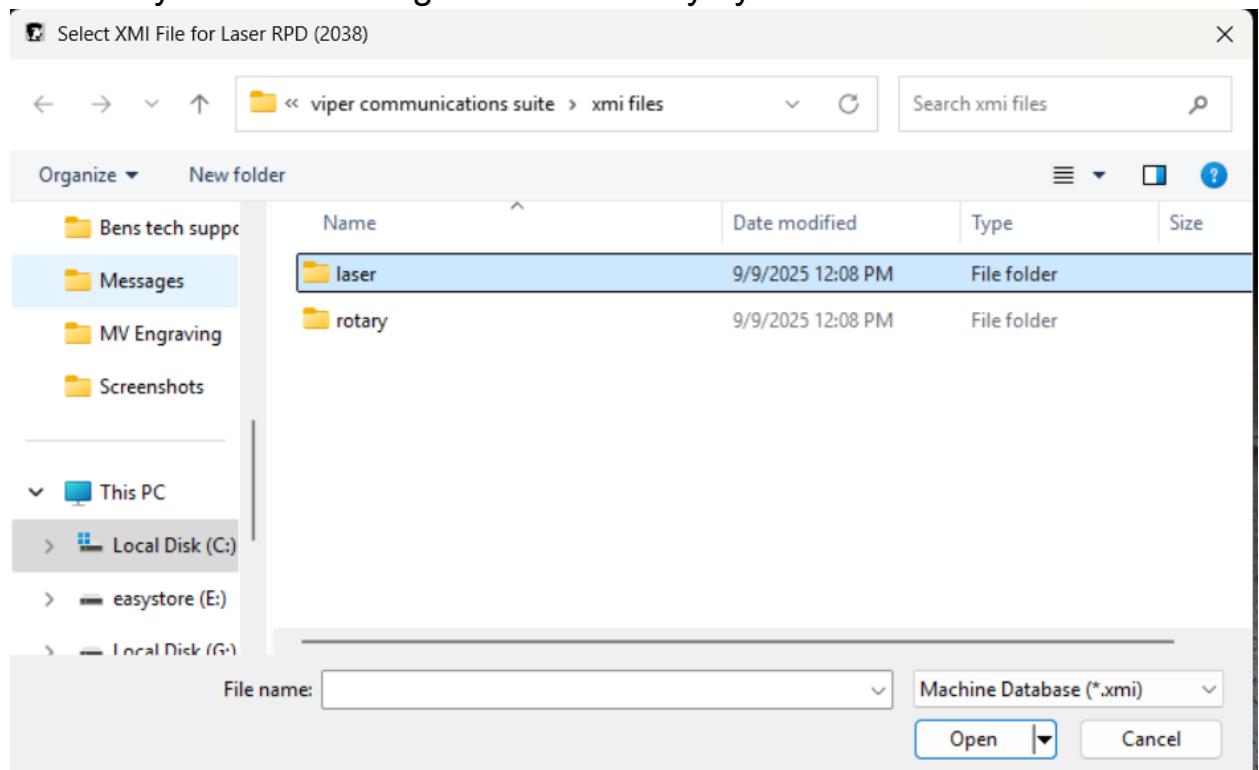
23. Select the system you are installing
24. Select the system you are installing



25.

26. Click OK

27. Select if you are installing a laser or rotary system



28.

29. Select Open

Name	Date modified	Type	Size
color screen	9/9/2025 12:08 PM	File folder	
monochrome screen	9/9/2025 12:08 PM	File folder	
rpc353	9/9/2025 12:08 PM	File folder	

ame:  Machine Database (\*.xmi)

30.

31. If you look back in step 18, my laser is an RPD, Not shown in step 29.  
In step 29 select color and you will see RPD

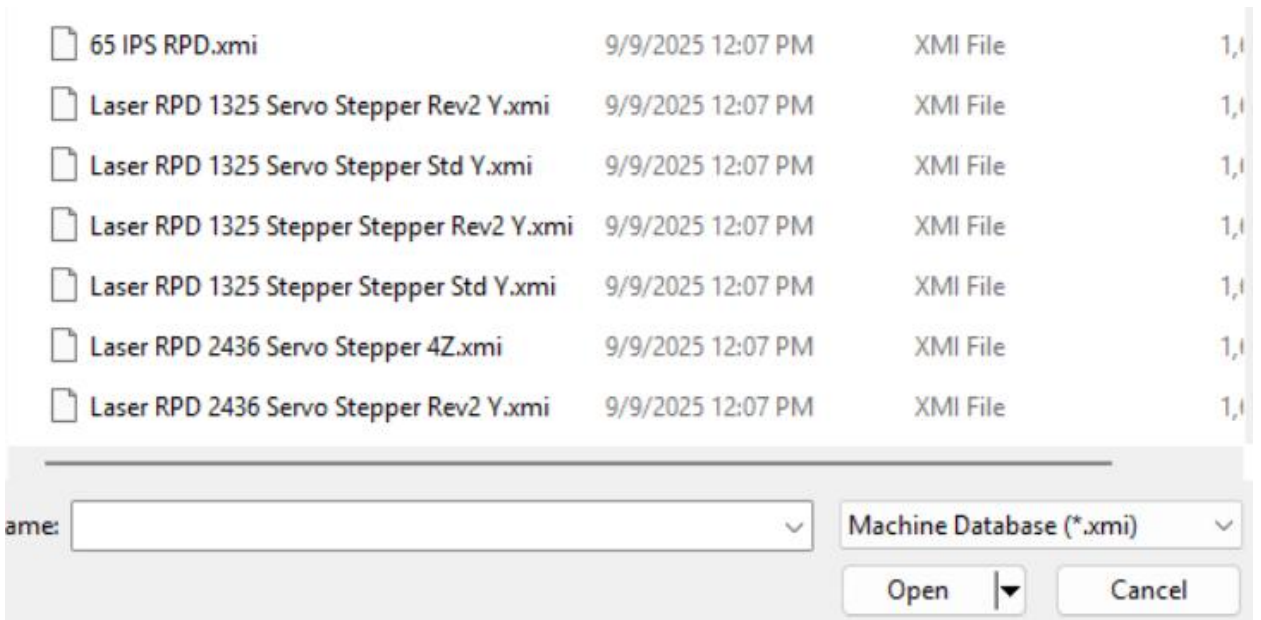
Name	Date modified	Type	Size
original laser electronics	9/9/2025 12:08 PM	File folder	
rpc stack	9/9/2025 12:08 PM	File folder	

ame:  Machine Database (\*.xmi)

32.

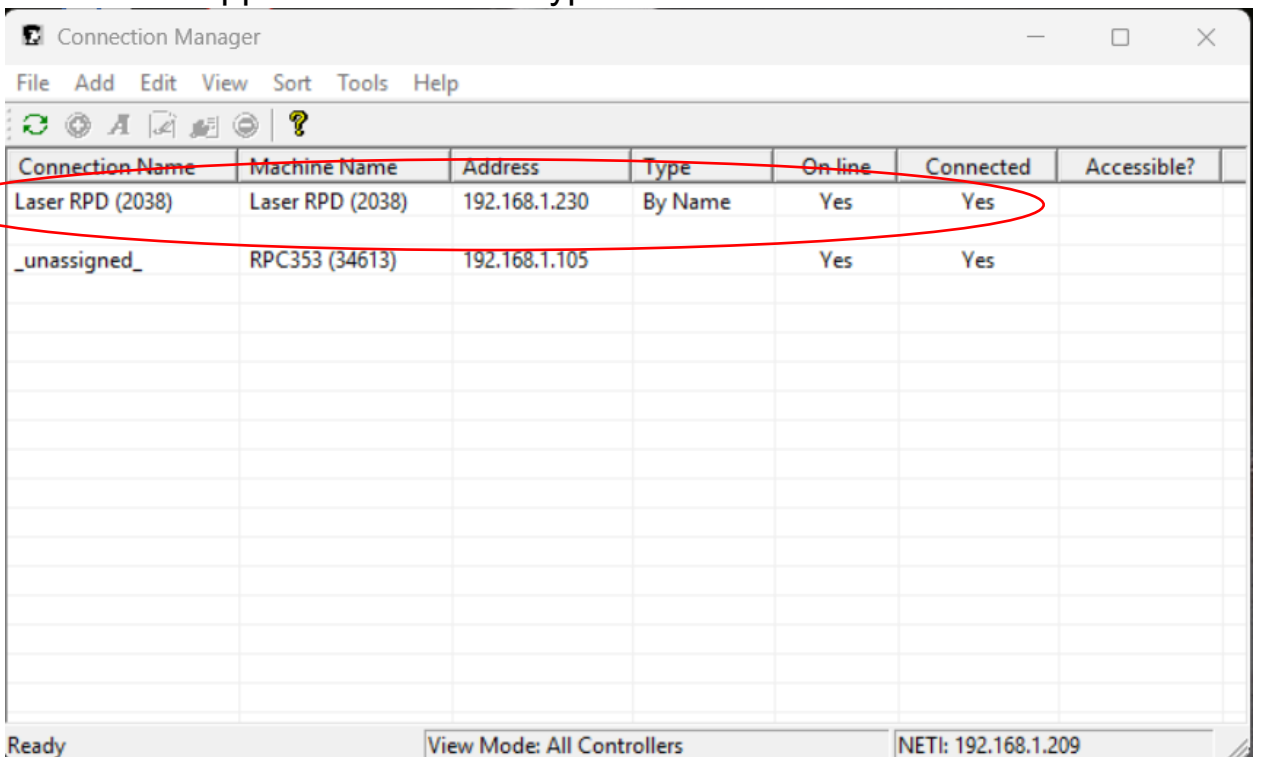
33. In the next window select Xenetech

34. Now you must select the laser you have.



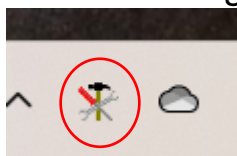
35.

36. Please see appendix A for laser type



37.

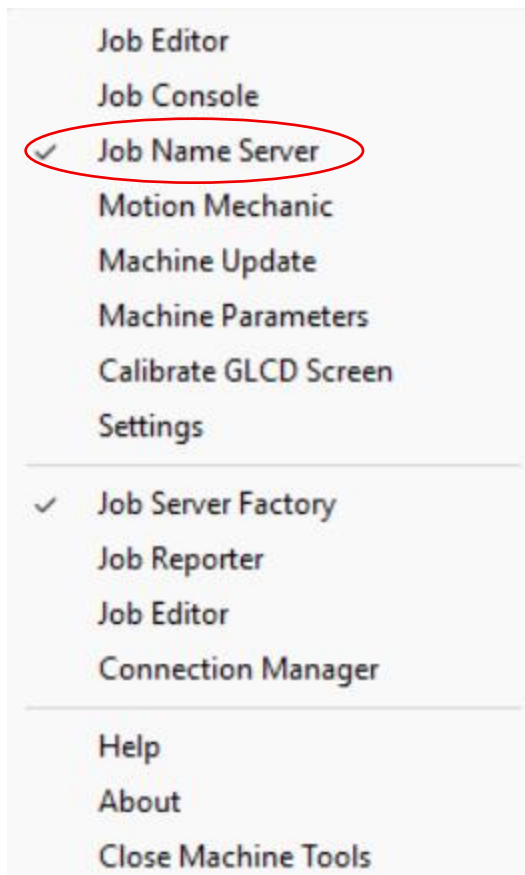
38. One more thing to check, Right click on the VCS icon in the system



tray

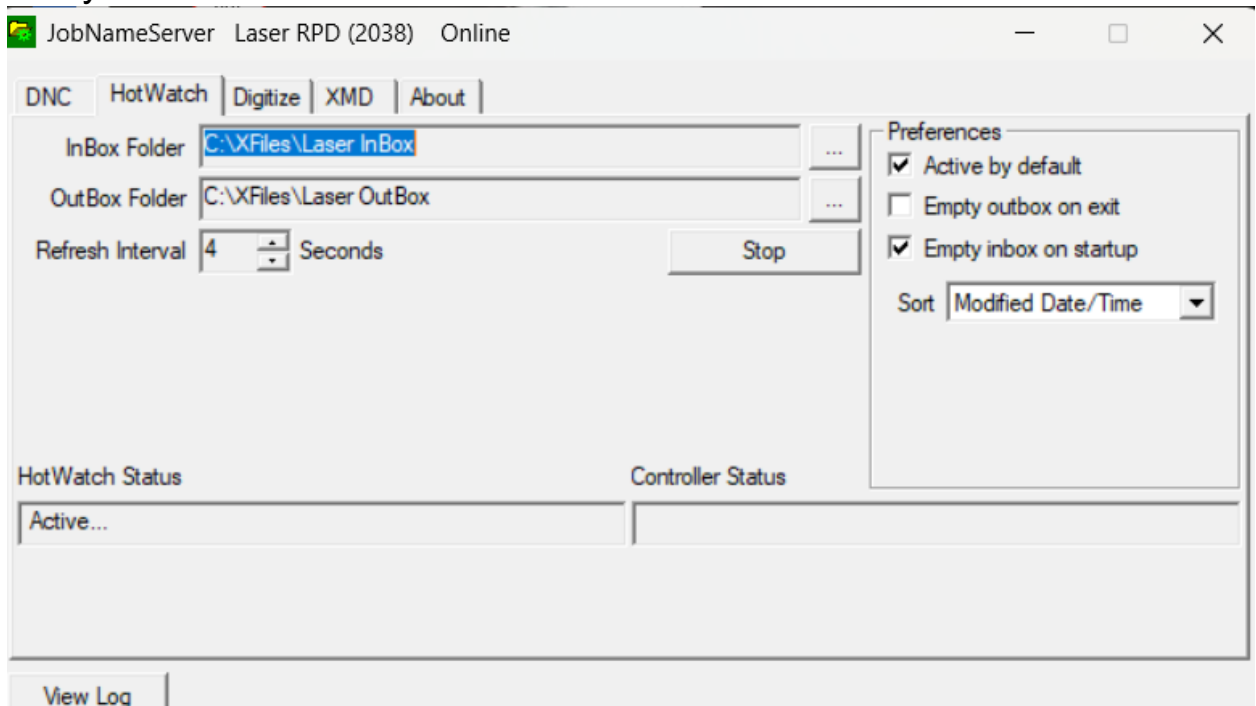
39. Select Job name server and open it





40.

41. Verify Job name server with the hot watch tab selected it look like this”



42.